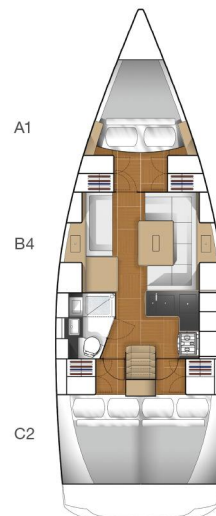
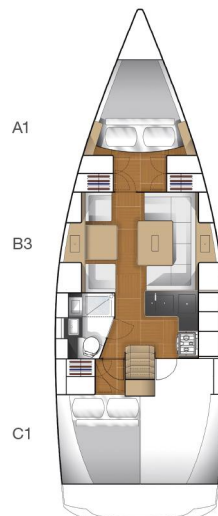
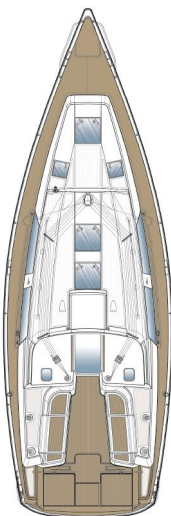


LOA	11.35 m 37'3"
Hull length	11.25 m 36'11"
LWL	10.05 m 33'
Beam	3.75 m 12'4"
Draft	1.95 m 6'5" (standard - iron keel) 1.60 m 5'3" (option - composite iron / lead keel)
Displacement	approx. 7.2 t approx. 15,873 lb
Ballast	approx. 2,165 kg approx. 4,773 lb
Engine	20.1 kW / 27,3 HP
Fresh water	approx. 325 l
Fuel tank	approx. 100 l
CE Certificate	A (ocean)
Mast length above WL	approx. 17.77 m approx. 58'3"
Total sail area	approx. 87.40 m ² approx. 941 sq ft
Main sail	approx. 42.50 m ² approx. 457.48 sq ft
Self-tacking jib	approx. 28.60 m ² approx. 308 sq ft
Rig	I 15.00 m 49'3" J 4.15 m 13'7" P 14.40 m 47'3" E 5.15 m 16'11"
Design	judel / vrolijk & co
Interior	HanseYachts Design

Model year 2010/2011 – valid from September 16th, 2010

STANDARD

OPTIONS



Hull

- White hull
- Dark grey double waterlines
- Options for different hull colour according to Hanse colour selection
- Isophthalic Gelcoat
- Vinylester 1st layer
- Bulk laminate Polyester (orthophtalic or DCPD)
- Balsa Sandwich construction/solid below waterline
- Bulkheads laminated to hull and deck
- GRP strongbacks
- Hull windows

Deck

- White deck
- Isophthalic Gelcoat
- Vinylester 1st layer
- Bulk laminate Polyester (Orthophtalic or DCPD)
- Balsa sandwich
- Non-slip deck surface on coach roof

Steering System

- Rod link steering system
- Steering wheel with leather
- Semi-balanced, profi led rudder with alloy shaft and self aligning needle bearings
- Emergency tiller
- Option: Twin Wheel steering system

Keel

- Cast iron T-speed keel with low centre of gravity
- Draft: 1.95 / 6' 5"
- Option: shallow draft 1.60 m / 5' 3" (iron/lead)
- Stainless steel keel bolts

Deck Equipment

- Self-draining anchor locker with lockable hatch
- Self-draining cockpit with large lockable storage
- 3 opening flush hatches in fwd. cabin
- 2 opening flush hatches in saloon
- 4 opening acrylic port lights, 3 in saloon, 1 in heads
- 1 opening hatch for aft cabin
- 4 mooring cleats
- 2 self-tailing halyard winches 40 AST
- 2 self-tailing genoa winches 40 AST
- Halyards lead aft to cockpit
- Control lines covered on the coach roof
- Winch handle
- Shower on aft deck
- Bow fitting with anchor roller and pad eye
- 10 halyard stoppers
- Split pulpit
- Pushpit with ensign staff socket
- Sliding hatch garage
- Sliding hatch
- Wash board
- Double stainless steel wire guard rail
- Handrails
- Teak on cockpit seats
- Swimming ladder

Technical System**Plumbing System / Fresh Water****Tank**

- Fresh water, capacity approx. 325 l
- Water infli II on deck

Pumps

- Electrical pressurised water system

Faucets

- Faucets in galley and head

Draining Pumps**Bilge pumps**

- 1 manual bilge pump
- 1 electric bilge pump

Toilet / Head

- Holding tank
- Sea and deck discharge
- 1 manual marine toilet
- 1 heavy duty shower drain pump

Engine

- Volvo D2-30, 20.1 kW / 27,3 HP, diesel engine
- Saildrive
- Fresh water cooling
- 2-blade fixed propeller
- Fuel tank, approx. 100 l
- Fuel infill on deck
- Sea water strainer
- Fuel filter / Water separator
- Revolution counter
- Engine hour meter
- Engine room sound insulated

Electrics

- 12 V and 230 V electrical circuits
- Shore power 230 V incl. differential breaker

Battery charger

- Battery charger 12 V / 30 Amp.

Batteries

- Main battery switch
- 1 Engine battery: 12 V / 80 Ah AGM
- 1 Service battery: 12 V / 80 Ah AGM

Electric control panel 12 V

- Onboard electrics
- Socket 12 V
- Voltmeter
- Water / Fuel gauges
- **Electric panel 230 V**
- Differential breaker
- Socket 230 V
- Separate switch for warm water heater

Interior lighting

- in fwd. cabin
- in aft cabin
- in saloon
- in galley
- in head
- in storage room
- in engine room

Navigation lights

- Steaming light
- Bow light
- Stern light
- Anchor light

Navigation instruments

- Illuminated compass
- Depth sounder
- Log

Galley

- Solid surface stone optic - cream
- Double stainless steel sink
- 2-burner LPG gas with oven, gimble
- Gas system and self draining LPG bottle storage in cockpit
- Lockers and drawers
- Extra large 12 V fridge of approx. 130 l, top and front loader with light
- Waste bin

Interior Accommodation

- High quality marine plywood, mahogany veneer, satin varnish
- Option Beech veneer, satin varnish
- White bulkheads
- Wooden door frames
- Wood / Sandwich doors

Upholstery

- According to Hanse colour selection

Forward cabin

- Separated from saloon by a door
- Large double berth
- Combined locker
- Shelves above berth

Aft cabin

- Separated from saloon by a door
- Large double berth
- Combined locker
- Shelf
- Option: 2nd aft cabin with double berth and locker

Saloon

- Companionway steps
- U-shaped settee area on starboard
- Saloon table
- Bar locker
- Lockers and shelves
- 2 Hull windows

Navigation area

- 2 single seats on port side
- Option: long bench
- Chart table with storage between single seats
- Electric switch panel

Head / Shower

- Large head with separate shower stall
- Marine toilet
- Holding tank
- Sea and deck discharge
- Sink
- Electrical drain pump
- Mirror
- Locker & shelves
- 1 opening port light

Rigg and Sails

- 9/10-rig, tapered masttop
- 2 spreader anodised aluminium mast and boom
- Furling system for jib
- Hanse single line reefing system (cockpit handling)
- Rod kicker
- Stainless steel standing rigging
- Backstay adjuster
- Main and jib halyard lead aft to cockpit
- Main and jib sheets
- Midboom sheeting with 2 stand-up blocks
- Main sail fully battened with 2 reefs
- Self-tacking jib with traveller